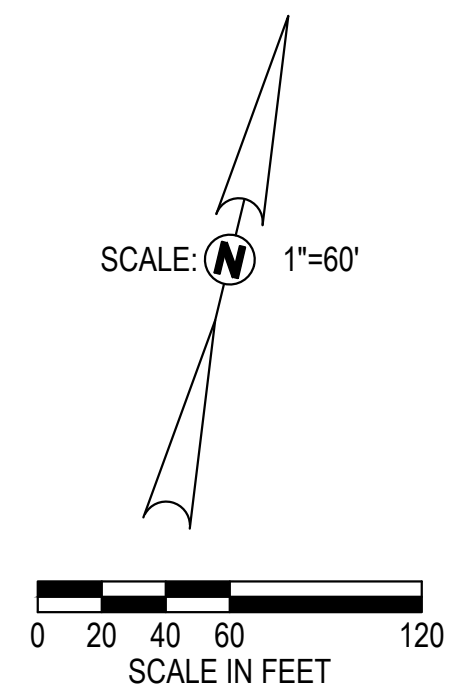


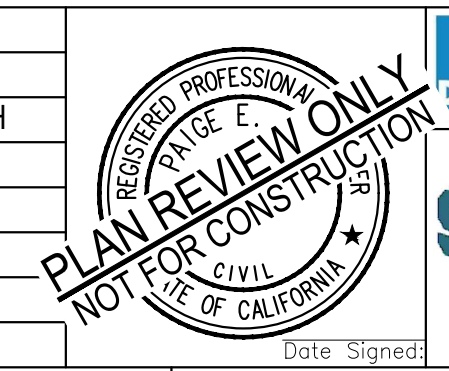
- LEGEND:**
- LIMITS OF PROPOSED CLASS II AGGREGATE BASE IMPROVEMENTS (PHASE 1)
 - LIMITS OF PROPOSED CLASS II AGGREGATE BASE IMPROVEMENTS (PHASE 2)
 - LIMITS OF PROPOSED ASPHALTIC CONCRETE PAVEMENT STRUCTURAL SECTION IMPROVEMENTS (PHASE 1)
 - PROPERTY LINE
 - LOT LINE
 - PROPOSED 7' TALL CHAIN LINK FENCE (PHASE 1)
 - PROPOSED 7' TALL MANUAL CHAIN LINK DOUBLE LEAF SWING GATE (PHASE 1)
 - EXISTING CHAIN LINK FENCE
 - ① PROPOSED DIRECTIONAL ARROWS (PHASE 1)
 - ② PAINT 12" WIDE STOP BAR WITH 6' HIGH LETTERS READING "STOP". (PHASE 1)
 - ③ PROPOSED CLASS II AGGREGATE BASE (PHASE 1)
 - ④ PROPOSED MANUAL CHAIN LINK DOUBLE LEAF SWING GATE (PHASE 1)
 - ⑤ MOUNT SIGN ON INTERIOR OF FENCE STATING "VEHICLE ENTRANCE ONLY. NOT AN EXIT" (PHASE 1)
 - ⑥ MOUNT SIGN ON EXTERIOR OF FENCE STATING "VEHICLE EXIT ONLY" (PHASE 1)
 - ⑦ PAINT 4" WIDE TRAFFIC WHITE PARKING STRIPE. (PHASE 1)
 - ⑧ CALTRANS R3-SR "RIGHT TURN ONLY" SIGN (PHASE 1)
 - ⑨ PROPOSED CLASS II AGGREGATE BASE (PHASE 2)



C:\Users\jermith\AppData\Local\Temp\AcPublish_32512224312_s1.dwg 10/14/2025 11:05am BY: jermith

REV	DATE	DESCRIPTION	DSGN	DWN	CHKD	SUPV	APVD	DATE

JOB NO	224-0312
DSGN	J. SMITH
DWN	J. THONEPHANH
CHKD	P. NOGA
SUPV	P. NOGA
APVD 1	
APVD 2	
DATE	07.03.2025



Blair Church & Flynn
CONSULTING ENGINEERS
451 CLOVIS AVE., SUITE 200
CLOVIS, CALIFORNIA 93612
TEL (559) 328-1400
FAX (559) 328-1500

PG&E NO	--
SITE TYPE	SERVICE CENTER
SITE NAME	STOCKTON SC
SITE CODE	--
BLDG CODE	N/A
BLDG NAME	N/A
FLOOR CODE	00
JOB NO	224-0312

CIVIL
PG&E STOCKTON SERVICE CENTER
LAYDOWN YARD
SITE, LAYOUT, AND GRADING PLAN
4040 WEST LANE, STOCKTON, CA 95204

95% CONSTRUCTION DOCUMENTS

WARNING: THIS DOCUMENT CONTAINS CONFIDENTIAL PROPRIETARY INFORMATION THAT IS THE SOLE PROPERTY OF PACIFIC GAS AND ELECTRIC COMPANY AND IS INTENDED FOR USE ONLY BY AUTHORIZED PACIFIC GAS AND ELECTRIC COMPANY EMPLOYEES AND ITS AGENTS.	
ERM DRAWING NUMBER	-----
SHEET NUMBER	REV
C103	1