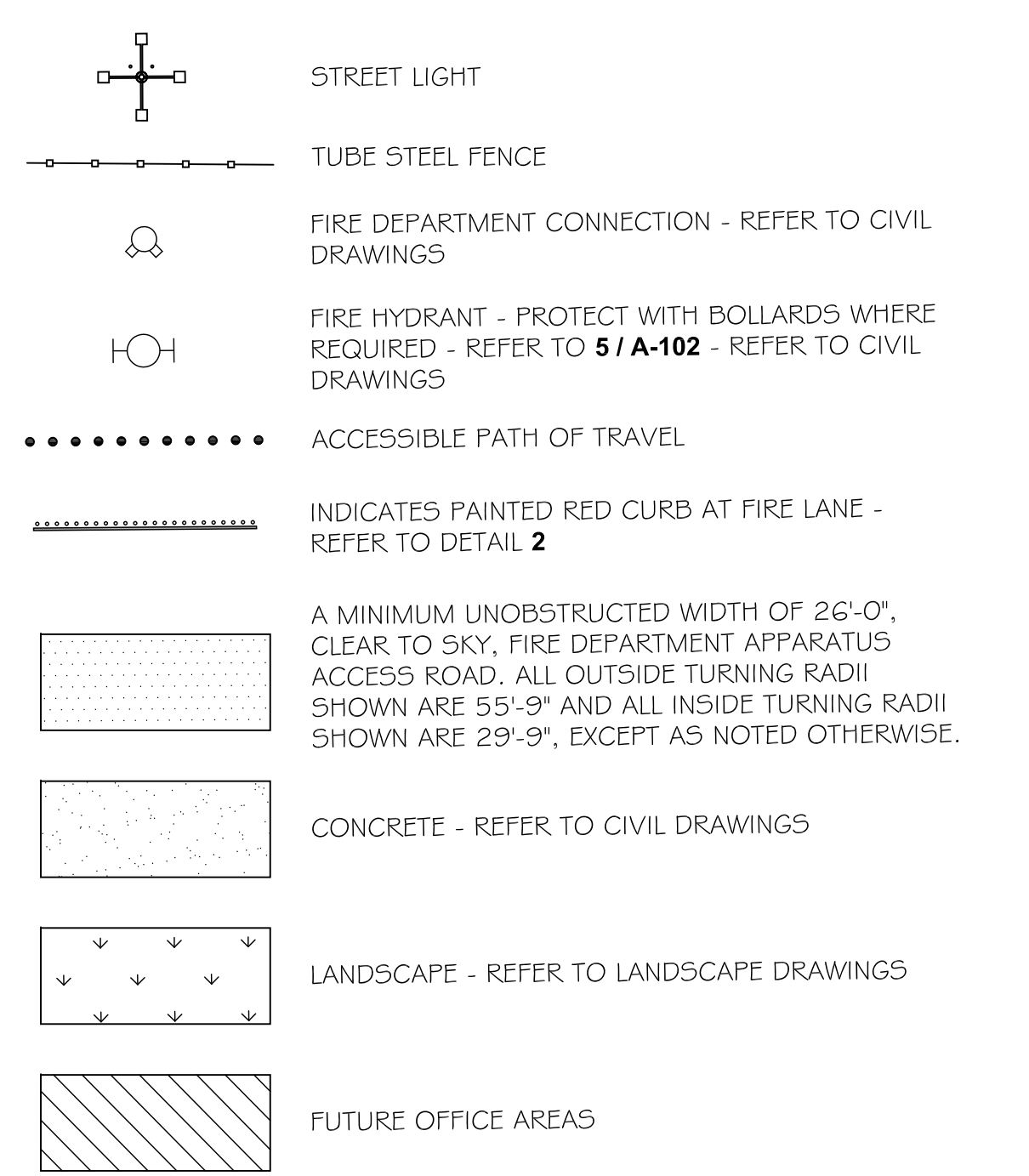


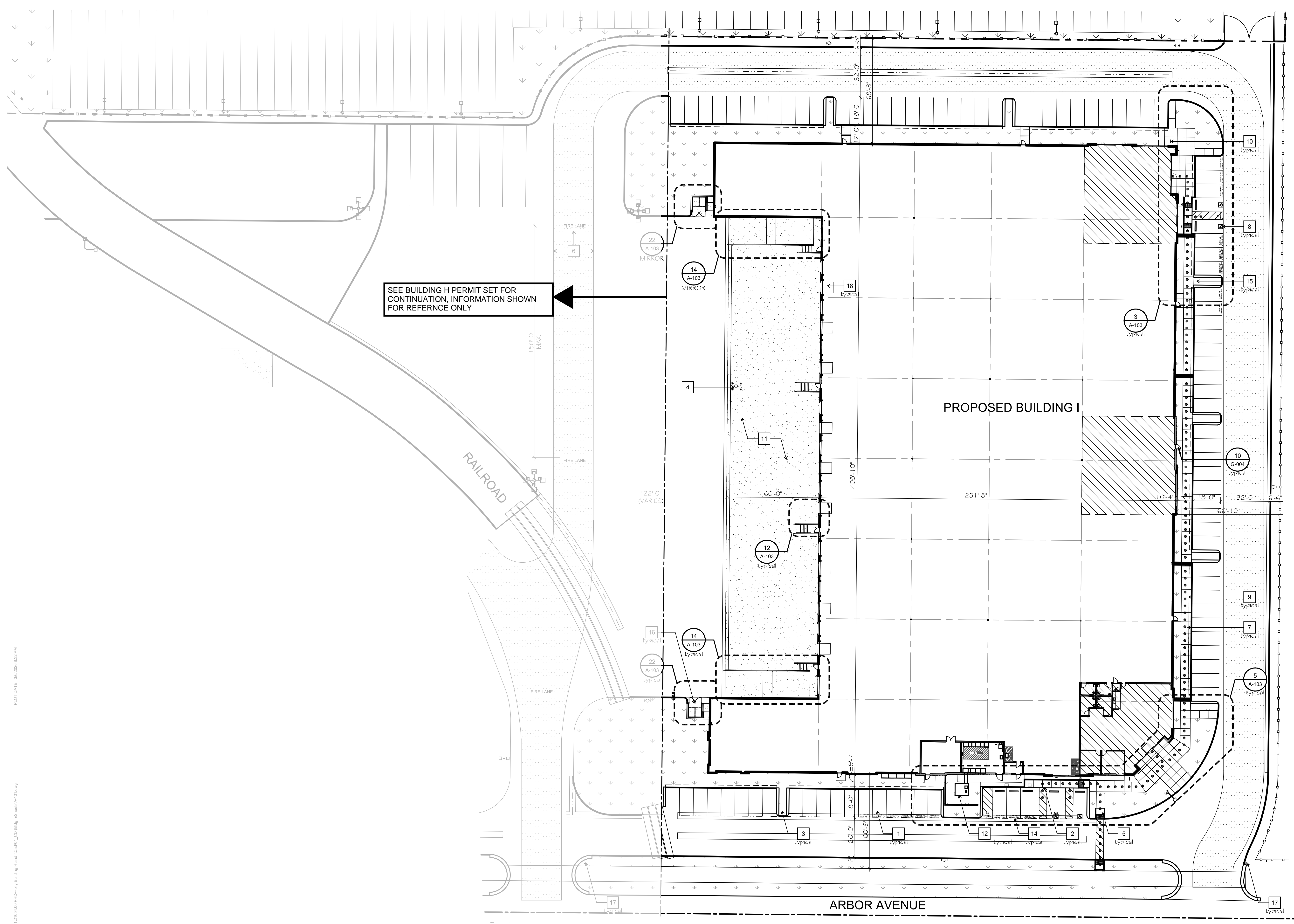
- 1 TYPICAL PARKING STALL 9'-0" X 1 8'-0" WITH 2'-0" BUMPER OVERHANG (SHOWN DASHED) UNLESS OTHERWISE NOTED.
- 2 ZERO CURB FACE AT ACCESSIBLE ACCESS AISLES - REFER TO DETAIL 3 / G-004 AND CIVIL DRAWINGS
- 3 LANDSCAPE ISLAND - REFER TO 20 / A-102 - typical
- 4 FIRE HYDRANT LOCATION PER FIRE PROTECTION DRAWINGS - PROTECT WITH BOLLARDS, WHERE REQUIRED. REFER TO 5 / A-102
- 5 ADA ACCESSIBLE CURB RAMP - REFER TO CIVIL DRAWINGS AND 4 / G-004
- 6 IN TRUCK COURT, THE BORDERS OF THE FIRE APPARATUS ACCESS ROAD SHALL BE PAINTED WITH 5-INCH RED STRIPES TO DESIGNATE THE 26' WIDTH REQUIREMENT. WORDS "FIRE LANE" SHALL BE STENCILED AT EACH END OF THE FIRE APPARATUS ACCESS ROAD IN TRUCK COURT AND AT INTERVALS OF 150 FEET OR LESS. THE LETTERS SHALL BE WHITE, 2 FEET IN HEIGHT WITH A 3-INCH STROKE - typical
- 7 CONCRETE SIDEWALK WITH LIGHT BROOM FINISH - REFER TO CIVIL DRAWINGS
- 8 TYPICAL ACCESSIBLE PARKING STALL WITH ALL SYMBOLS, SIGNS, RAMP AS REQUIRED TO MEET TITLE 24 AND ADA REQUIREMENTS - REFER TO 3 / G-004 AND 4 / G-004
- 9 LINE OF 2'-0" PARKING OVERHANG (SHOWN DASHED)
- 10 BICYCLE RACK - REFER TO 21 / G-004
- 11 60'-0" DEEP CONCRETE APRON WITH MEDIUM BROOM FINISH AT TRUCK DOCKS - REFER TO CIVIL DRAWINGS
- 12 TRANSFORMER - REFER TO ELECTRICAL DRAWINGS
- 13 CURB AND GUTTER - REFER TO CIVIL DRAWINGS AND DETAIL 2
- 14 CLEAN AIR VEHICLE PARKING STALLS - PAINT, IN THE PAINT USED FOR STALL STRIPING, THE FOLLOWING CHARACTERS SUCH THAT THE LOWER EDGE OF THE LAST WORD ALIGNS WITH THE END OF THE STALL STRIPING AND IS VISIBLE BENEATH A PARKED VEHICLE:
CLEAN AIR /
VANPOOL / EV
- 15 REFER TO 15 / A-102
FUTURE ELECTRIC VEHICLE CHARGING STATION - PROVIDE 1" CONDUIT MIN., COORDINATE CONDUIT ROUTING WITH ELECTRICAL DRAWINGS
- 16 TRASH AND RECYCLING ENCLOSURE - REFER TO 14 / A-102 AND 22 / A-103 AND STRUCTURAL DRAWINGS
- 17 FIRE LANE SIGNAGE - REFER TO DETAIL 3
- 18 MECHANICAL DOCK LEVELER, TYPICAL OF 9

KEY NOTES



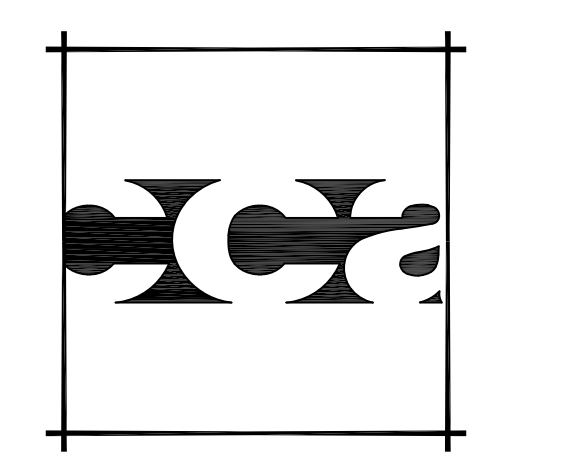
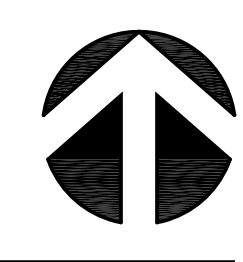
LEGEND

1. REFER TO CIVIL PLANS FOR SITE DIMENSIONS METES AND BOUNDS, GRADING, PAVING, DRAINAGE AND HORIZONTAL CONTROLS.
2. REFER TO LANDSCAPE DRAWINGS FOR HARDSCAPE, PLANTING FINE GRADING AND SOILS PREPARATION.
3. REFER TO GEOTECHNICAL REPORT FOR INFORMATION REGARDING GRADING, BEARING, VALUES, COMPACTION, PAVING SECTIONS, CONCRETE MIX DESIGN AND SOIL AMENDMENT INFORMATION.
4. VERIFY THAT ALL GRADES AND CLEARANCE ON SITE COMPLY WITH REQUIREMENTS FOR PERSONS WITH DISABILITIES AS SHOWN ON ALL ARCHITECTURAL AND CIVIL PLANS PRIOR TO CONSTRUCTION.
5. CURBS TO BE PAINTED RED AND LABELED 'NO PARKING/ FIRE LANE' PER THE SAN JOAQUIN COUNTY FIRE DEPARTMENT REQUIREMENTS - AS SHOWN PER PLAN.
6. ALL PROPERTY LINES, EASEMENTS AND BUILDINGS, BOTH EXISTING AND PROPOSED, ARE TO BE VERIFIED WITH CIVIL DRAWINGS.
7. CONTRACTOR TO VERIFY ALL INFORMATION CONTAINED ON THIS DRAWING WITH CIVIL DRAWINGS. CONTACT ARCHITECT IF ANY DISCREPANCIES EXIST.
8. TEMPORARY ACCESS ROADWAYS SHALL BE INSTALLED AND MAINTAINED PER THE DIRECTION OF THE SAN JOAQUIN COUNTY FIRE DEPARTMENT.
9. IDENTIFICATION AND POSTING OF REQUIRED FIRE LANES SHALL BE PROVIDED AS DIRECTED BY THE ASSIGNED FIRE INSPECTOR.
10. PROVIDE BUMPER STOPS FOR ALL PARKING STALLS ADJACENT TO A SIDEWALK OR BUILDING. REFER TO SITE PLAN FOR LOCATIONS.
11. REFER TO SHEET G-002 FOR SOUTH COUNTY FIRE AUTHORITY NOTES.



SITE PLAN & FIRE ACCESS PLAN

SCALE: 1" = 30'-0"



**Carlike
Coatsworth
Architects, Inc.**

18600 MacArthur Boulevard Suite 300
Irvine, California 92612
949.833.1950
www.ccarlarchitects.com



HOLLY BUILDING I

9215 ARBOR AVE.
TRACY, CA

MILESTONES:
JANUARY 06, 2025
PLAN CHECK SUBMITTAL

REVISIONS:

PROJECT: 21054
FILE: A-101.DWG
DATE:
DRAWN BY: LB, AY
SHEET TITLE:
SITE PLAN & FIRE ACCESS PLAN

A-101