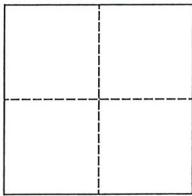


CORNER RECORD

Agency Index CR-23-053
 Document Number _____

City of _____ County of San Joaquin, California
 Brief Legal Description Live Oak Road 2415± east of Jack Tone Road
Within Sec. 30, T3N, R8E, Mount Diablo Base & Meridian



CORNER TYPE

Government Corner Control
 Meander Property
 Rancho Other

Date of Survey November 3, 2021

COORDINATES (Optional)

N. _____ E. _____
 Elevation. _____
 Units Metric U.S. Survey Foot
 Horizontal Datum _____
 Zone _____ Epoch Date _____
 Vertical Datum _____
 Complies with Public Resources Code §§8801-8819
 Complies with Public Resources Code §§8890-8902

PLS Act Ref.: 8765(d) 8771 8773 Other:
 Corner/Monument: Left as found Established Rebuilt Pre-Construction
 Found and tagged Reestablished Referenced Post-Construction

Narrative of corner identified and monument as found, set, reset, replaced, or removed:
 See sheet #2 for description(s):

SURVEYOR'S STATEMENT

This Corner Record was prepared by me or under my direction in conformance with
 the Professional Land Surveyor's Act on November 4, 2021
 Signed James E. Hart P.L.S. or R.C.E. No. 8657

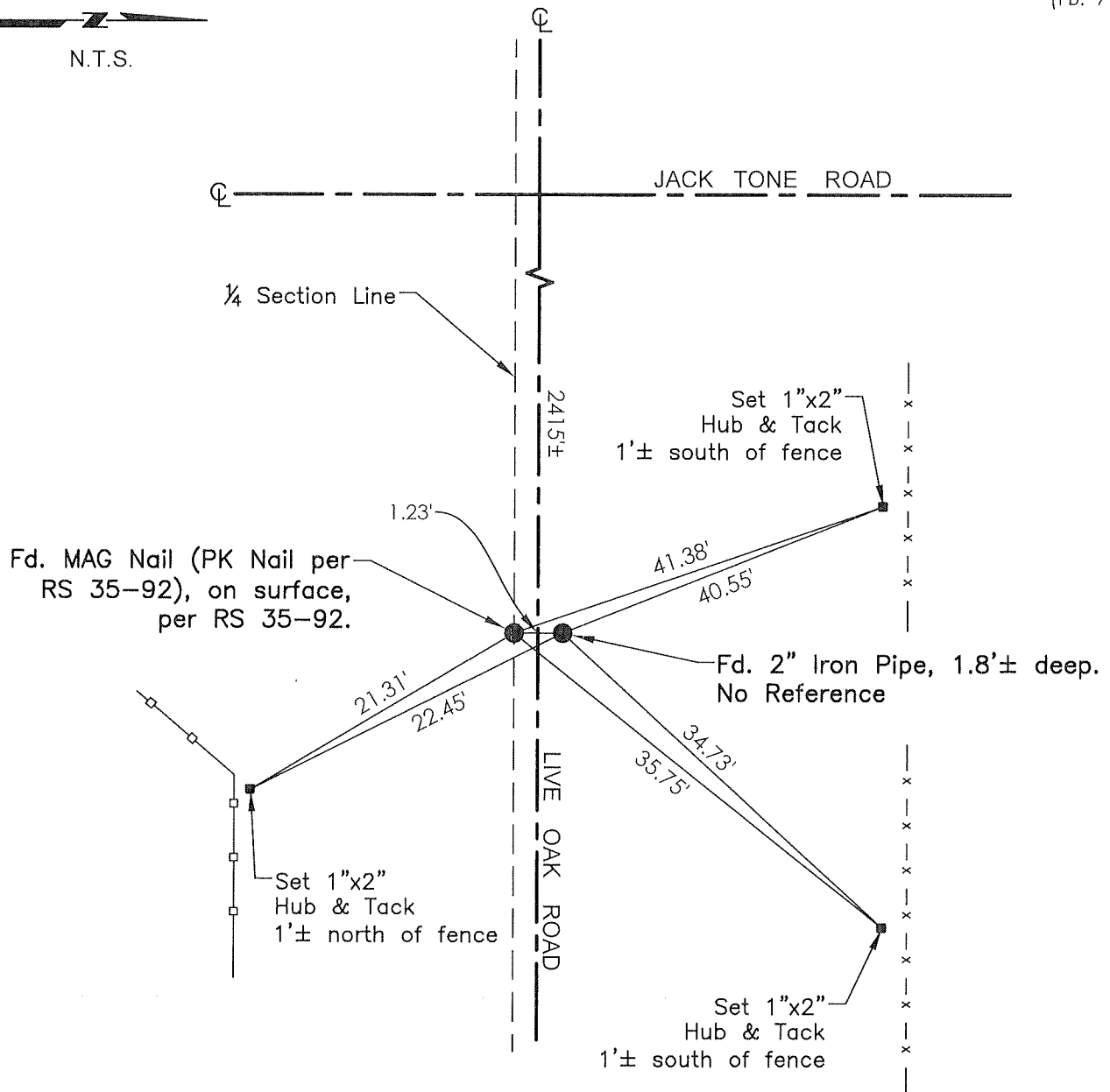


COUNTY SURVEYOR'S STATEMENT

This Corner Record was received January 27, 2023
 and examined and filed February 10, 2023
 Signed James E. Hart P.L.S. or R.C.E. No. 8657
 Title _____ County Surveyor



County Surveyor's Comment



- TR=Tree
- MB=Mailbox
- BM=Bench Mark
- EP=Edge of Pavement
- YL=Yellow Line
- FH=Fire Hydrant
- CR=Corner Record
- FP=Fence Post
- JP=Joint Pole
- LP=Light Pole
- PP=Power Pole
- GP=Guy Pole
- SP=Service Pole
- TP=Telephone Pole
- S.F.N.=Searched Found Nothing
- N.T.S.=Not To Scale
- M&P=Maps & Plats
- PM=Parcel Map
- RS=Record of Survey
- FB=Field Book
- N=North
- SDI=Storm Drain Inlet
- TOC=Top of Curb
- PCC=Portland Cement Concrete

Set=Conc. Nail with Brass Washer stamped "S.J. Co.", unless otherwise noted
 Fd.=Found Conc. Nail with Brass Washer stamped "S.J. Co.", unless otherwise noted
 Note: Found Monuments are not tagged unless otherwise noted.

"No attempt was made to verify the Monument(s)"