

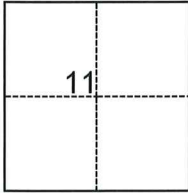
CORNER RECORD

Agency Index CR-25-094
Document Number _____

City of Lodi County of San Joaquin, California
Brief Legal Description PARCEL "A", P.M. 16-12

CORNER TYPE

COORDINATES (Optional)



- Government Corner
- Meander
- Rancho
- Control
- Property
- Other

Date of Survey September 13, 2024

N. _____ E. _____
 Elevation _____
 Units Metric U.S. Survey Foot
 Horizontal Datum _____
 Zone _____ Epoch Date _____
 Vertical Datum _____
 Complies with Public Resources Code §§8801-8819
 Complies with Public Resources Code §§8890-8902

T.3N., R.6E., M.D.B.&M.

- PLS Act Ref.: 8765(d) 8771 8773 Other:
- Corner/Monument: Left as found Established Rebuilt Pre-Construction
 Found and tagged Reestablished Referenced Post-Construction

Narrative of corner identified and monument as found, set, reset, replaced, or removed:

See sheet #2 for description(s):

SURVEYOR'S STATEMENT

This Corner Record was prepared by me or under my direction in conformance with
 the Professional Land Surveyors' Act on March 17, 2025
 Signed Joe Murphy (P.L.S.) or R.C.E. No. 7269

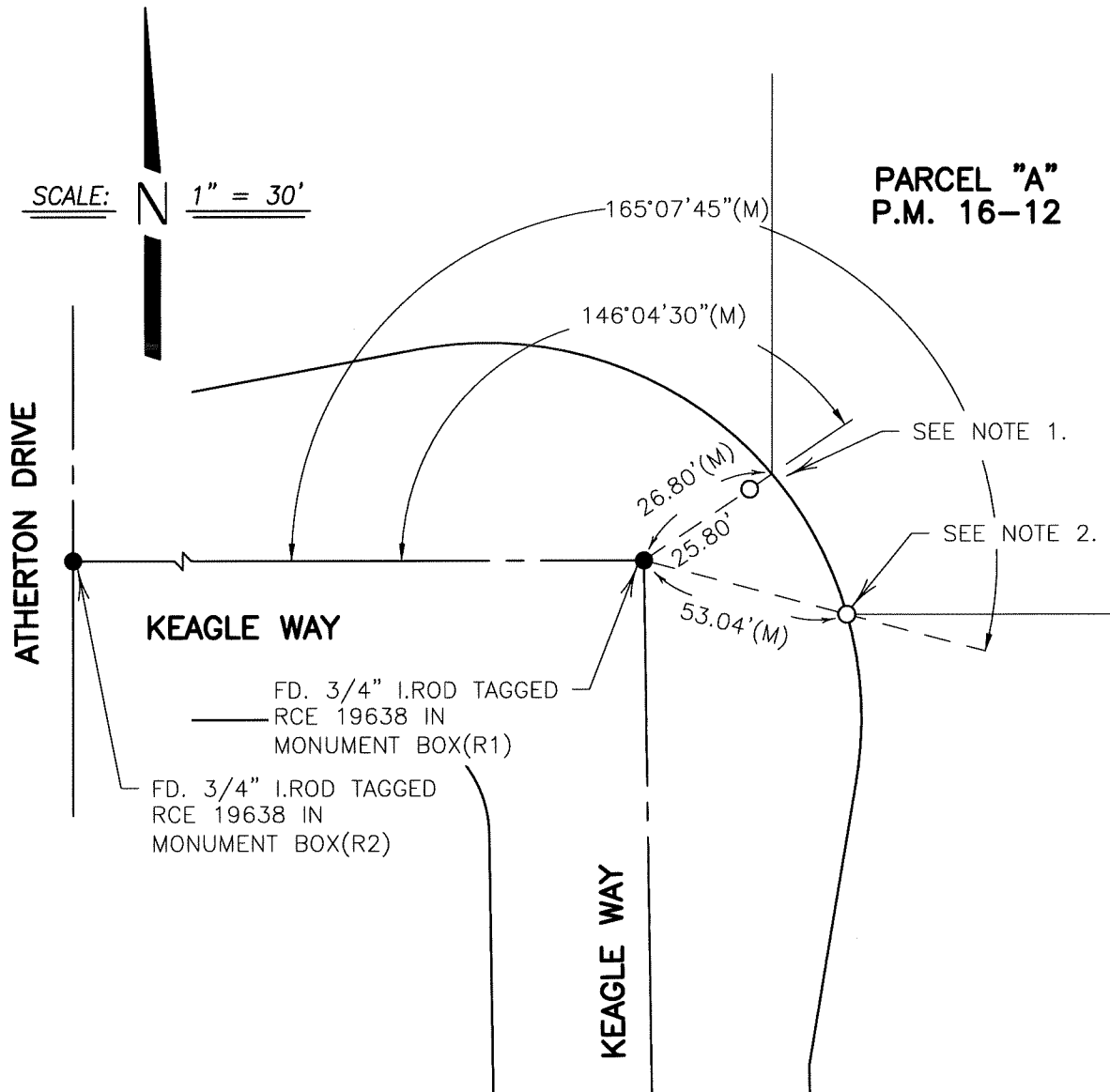


COUNTY SURVEYOR'S STATEMENT

This Corner Record was received March 25, 2025
 and examined and filed March 28, 2025
 Signed James E. Hart P.L.S. or R.C.E. No. 8657
 Title County Surveyor



County Surveyor's Comment



REFERENCES:

- (R1) P.M. 16-12, S.J.C.R.
- (R2) M.&P. 22-68, S.J.C.R.

LEGEND

- FD. S.J.C.R. (M) M.&P. P.M. I.ROD FOUND SAN JOAQUIN COUNTY RECORDS MEASURED MAPS AND PLATS PARCEL MAP IRON ROD
- FD. MONUMENT AS NOTED

NOTE:

1. FOUND 3/4" I.ROD PRIOR TO CONSTRUCTION. MONUMENT WAS REMOVED DURING CONSTRUCTION AND THE ORIGINAL LOCATION FALLS ON AN INSTALLED CONDUIT. A 3/4" X 30" I.ROD, CAPPED L.S. 7269, WAS SET AS A 1.00' WITNESS CORNER.
2. FOUND 3/4" I.ROD PRIOR TO CONSTRUCTION. MONUMENT WAS REMOVED DURING CONSTRUCTION AND REPLACED WITH A 3/4" X 30" I.ROD, CAPPED L.S. 7269 AT THE ORIGINAL SURVEYED LOCATION.