

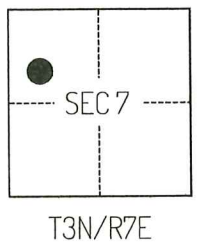
CORNER RECORD

Agency Index CR-26-102

Document Number _____

City of LODI County of SAN JOAQUIN, California

Brief Legal Description FOUND MONUMENTS NEAR THE INTERSECTION OF WOODROW STREET AND HALE ROAD.



CORNER TYPE

Government Corner Control
 Meander Property
 Rancho Other

Date of Survey JUNE 9, 2025

COORDINATES (Optional)

N. _____ E. _____
Elevation _____
Units Metric U.S. Survey Foot
Horizontal Datum _____
Zone _____ Epoch Date _____
Vertical Datum _____
 Complies with Public Resources Code §§8801-8819
 Complies with Public Resources Code §§8890-8902

PLS Act Ref.: 8765(d) 8771 8773 Other:

Corner/
Monument: Left as found Established Rebuilt Pre-Construction
 Found and tagged Reestablished Referenced Post-Construction

Narrative of corner identified and monument as found, set, reset, replaced, or removed:
 See sheet #2 for description(s):
THE FOUND MONUMENT(S) SHOWN ON THIS CORNER RECORD WERE FOUND AT THE LOCATION OF THE CORNER(S) ON CORNER RECORD 24-470, SAN JOAQUIN COUNTY SURVEYOR'S RECORDS. I DID NOT VERIFY THE IDENTITY AND VALIDITY OF THE MONUMENT(S) FOUND AS ACTUALLY MARKING THE PROPERTY CORNER.

SURVEYOR'S STATEMENT

This Corner Record was prepared by me or under my direction in conformance with the Professional Land Surveyors' Act on AUGUST 20, 2025.

Signed *Scott L. Blake* P.L.S. or R.C.E. No. 8489



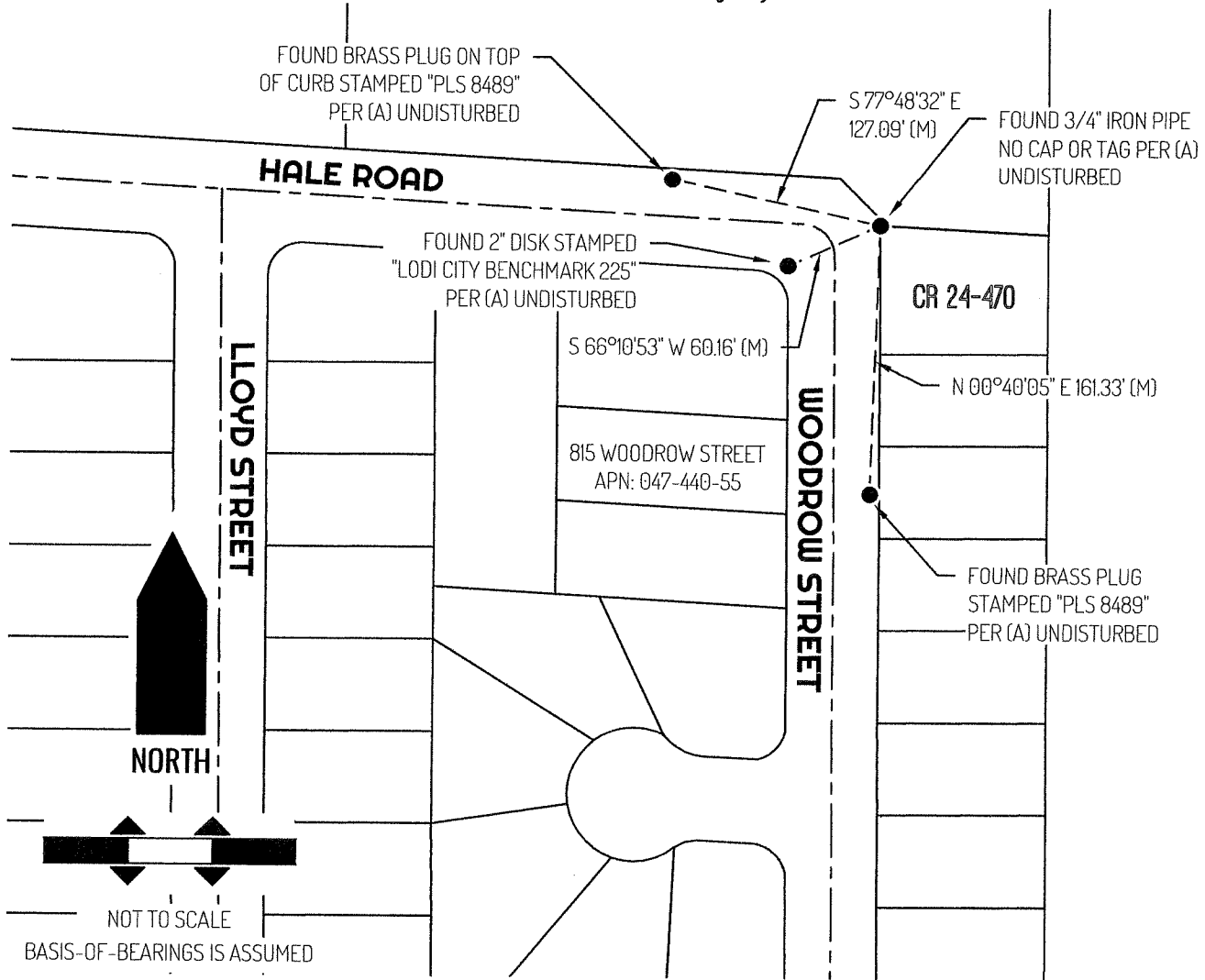
COUNTY SURVEYOR'S STATEMENT

This Corner Record was received February 23, 2026 and examined and filed March 3, 2026.

Signed *James E. Hart* P.L.S. or R.C.E. No. 8657
Title County Surveyor



County Surveyor's Comment



LEGEND

- FOUND MONUMENT AS NOTED
- 815 REFERENCE STREET ADDRESS
- CR CORNER RECORD, SAN JOAQUIN COUNTY SURVEYOR'S RECORDS
- (M) MEASURED
- APN TAX ASSESSOR PARCEL NUMBER
- - - - - TIE LINE
- _____ LOT LINE
- - - - - RIGHT-OF-WAY CENTERLINE

REFERENCE

(A) CORNER RECORD 24-470, SAN JOAQUIN COUNTY SURVEYOR'S RECORDS